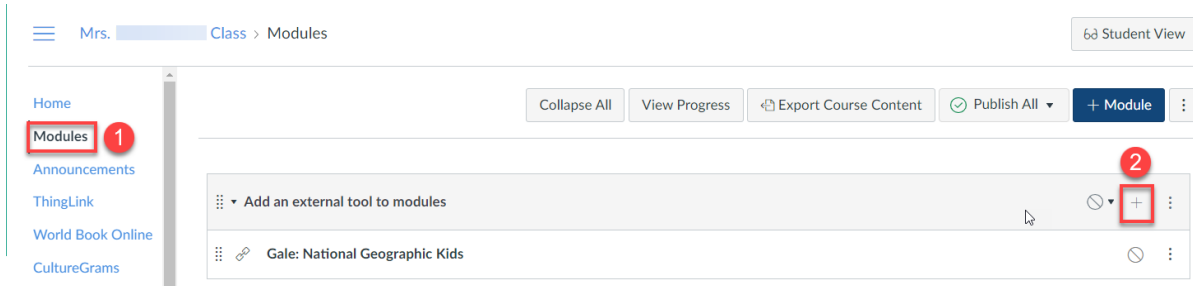


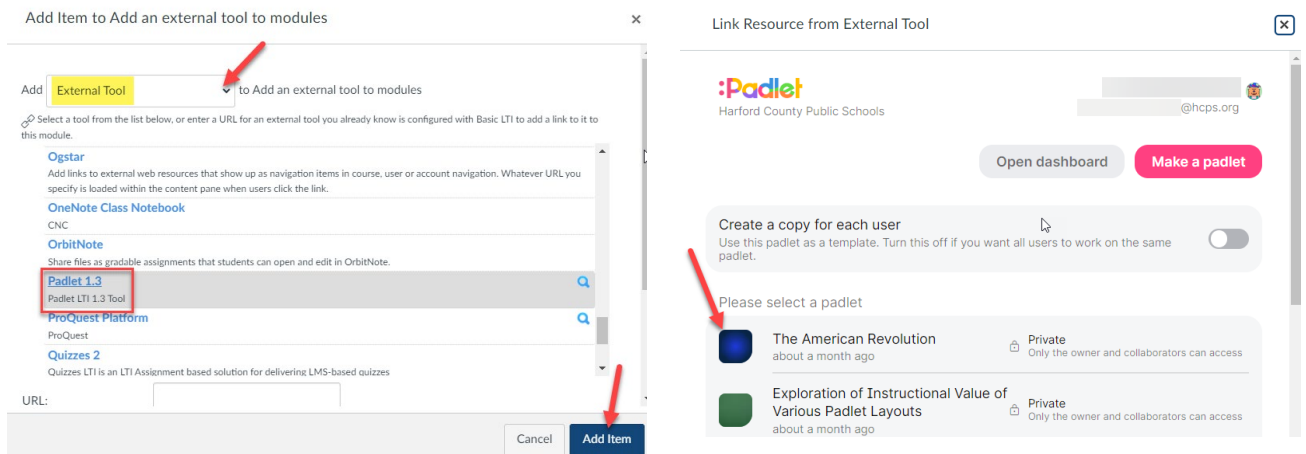
# Add Padlet to Modules and Assignments

## Option 1: Canvas Modules - External Tool

1. In *Course Navigation*, select **Modules**.
2. Select **+**

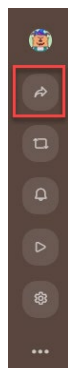


3. Select to add an **External Tool**. Select **Padlet 1.3**. Select a Padlet you want to add. Select **Add Item**.



**\*\*If you are adding a previously made Padlet (not created in our Harford Padlet instance), then you will need to change the privacy setting.**

1. Select **Share**



## 2. Select **Change Privacy**

CLOSE Share

Invite Members

ADD MEMBERS

Privacy ?

**Private.**  
Keep the padlet hidden from the public. Even if someone manages to get to it, they should not be able to access it.

CHANGE PRIVACY

## 3. Select **Org Wide**

BACK Change privacy SAVED

**Private**  
Keep the padlet hidden from the public. Even if someone manages to get to it, they should not be able to access it.

**Org wide**  
Keep the padlet hidden from the public. Let anyone from Harford County Public Schools access this padlet.

**Password**  
Keep the padlet hidden from the public. If I choose to share it with someone, they should require a password to access it.

**Secret**  
Keep the padlet hidden from the public. If I choose to share it with someone, they should be able to access it.

## Option 2: Canvas Assignment - External Tool

### 1. Create a new **Assignment**

Mrs. Class > Assignments

Search for Assignment

+ Group + Assignment

Assignments

Assignments

### 2. Under *Submission Type*, Select **Find**

Submission Type

External Tool

External Tool Options

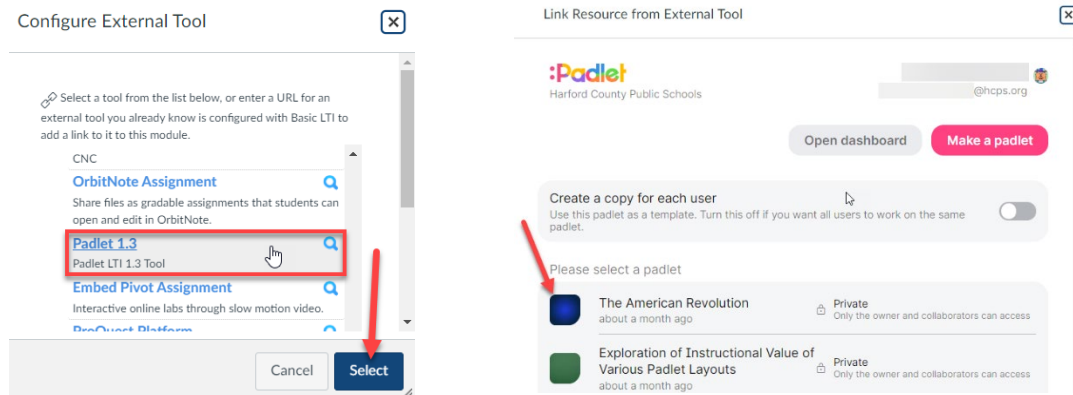
Enter or find an External Tool URL

http://www.example.com/launch Find

☐ Load This Tool In A New Tab

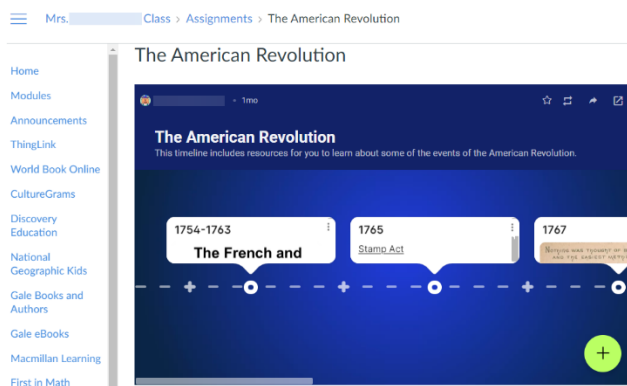
### 3. Select **Padlet 1.3**

Select a Padlet you want to add and choose **Select**.



### 4. Select **Save**

5. The Padlet will appear in Canvas



**\*\*If you are adding a previously made Padlet (not created in our Harford Padlet instance), then you will need to change the privacy setting. (Refer to the directions on page 1.)**